

# FARO® Scan Localizer

## On-site registration & processing made easy

# FARO®



### INDOOR GPS (IMU)

With the Scan Localizer real-time positioning in indoor environments is now easier than ever before. The inertial measurement unit (IMU) of the Scan Localizer reports device specific forces and angular rates.

### REAL-TIME REGISTRATION

The Scan Localizer utilizes advantages of several upmarket technologies and provides, by generating a 2D map of the environment, reliable positioning of 3D scans before leaving the job-site.

### GUARANTEED COMPATIBILITY

The Scan Localizer will seamlessly integrate with any FARO Focus<sup>3D</sup> Laser Scanner with built-in WLAN connection and directly export scans into SCENE.

### BATTERY POWERED

The long lasting battery block provides mobile operation of up to 3 hours in the field without recharging.

### XTRA PORTABLE

With a height of only 31 cm, a diameter of 31 cm and a weight of just 6 kg, the Scan Localizer is a fully portable system. The waterproof rugged transportation trolley provides additional space for a Focus<sup>3D</sup> Laser Scanner.

## COMPLETE MAPPING AND REGISTRATION SOLUTION WITH THE SCAN LOCALIZER

The FARO Scan Localizer is a state-of-the-art scanning accessory, which combines information of multiple sensors sources and software algorithms to determine the exact position of the laser scanner inside buildings.

While moving a FARO laser scanner device through a large site, the FARO Scan Localizer will capture the exact position of the laser scanner thus enabling error-free, fully automated registration. With this new workflow, users will be able to complete the whole scan and registration process on site, substantially reducing the need for time-consuming back office work and quality checks by a factor of 2 to 5 times.

With a battery runtime of 3 hours, the Scan Localizer also has a high level of flexibility and endurance. Its light weight, small size and WLAN integration make the Scan Localizer truly mobile.

## BENEFITS

The FARO Scan Localizer optimizes productivity when scanning in medium to large indoor projects.

The fully portable system is compatible with the complete line of Focus<sup>3D</sup> laser scanners and enables highest performance due to its indoor positioning without GPS signal, real-time 3D and disjoint scan data registration, easy on-site navigation, ease-of-use and remote control via integrated WLAN.

## PERFORMANCE SPECIFICATIONS

### Ranging unit

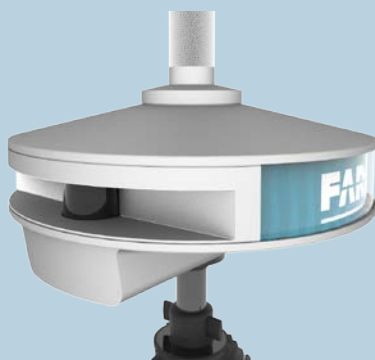
Range: 0 – 8 m (10% refl.)  
0 – 20m (90% refl.)

### Laser

Laser class: Laser class 1  
Wavelength: 905nm  
Field of view (horizontal): 180°  
Measurement frame rate: 40Hz  
Max. ambient light: 15,000lx

### Data handling and control

Data storage: SSD; 120GB integrated, direct export to SCENE via WLAN  
Device control: Via button and WLAN



## GENERAL

Power supply voltage: 19V (external supply)  
14.4V (internal battery)  
Power consumption: 35W (70W charging)  
(while battery charges)  
Battery life: 3 hours  
Ambient temperature: 5° - 40°C  
Humidity: Non-condensing

Interface: 1x USB, 1x Ethernet, WLAN  
Mounting: 3/8" hole  
Weight: 6kg  
Dimensions: Diameter: 31cm, Height: 31cm  
Maintenance / calibration: Not needed



**Global Offices:** Australia ▪ Brazil ▪ China ▪ France ▪ Germany  
India ▪ Italy ▪ Japan ▪ Malaysia ▪ Mexico ▪ Netherlands  
Philippines ▪ Poland ▪ Portugal ▪ Singapore ▪ Spain ▪ Switzerland  
Thailand ▪ Turkey ▪ United Kingdom ▪ USA ▪ Vietnam

www.faro.com  
Freecall 00 800 3276 7253  
info@faro-europe.com

